

A photograph of a modern interior space featuring a large, white, triangular luminous ceiling panel. The room has white walls and a dark blue carpet. The lighting is soft and even, highlighting the geometric shapes of the ceiling and walls.

PHILIPS

Large Luminous
Surfaces

OneSpace

Re-think the ceiling

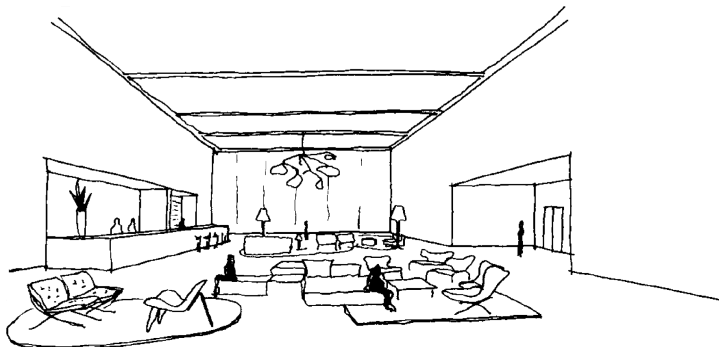
Philips OneSpace luminous ceiling





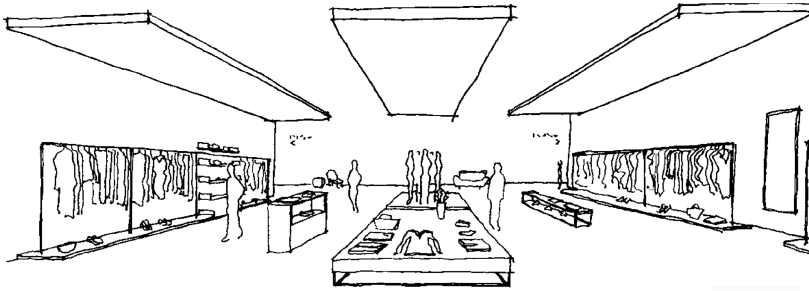
OneSpace – your vision

You asked us to re-think the ceiling, so we did. Now it's a blank canvas awaiting your vision. Our revolutionary OneSpace luminous ceiling is a made-to-measure panel that liberates you from the constraints of conventional ceiling design so you're free to pursue uncluttered minimalistic visions – and transform any interior into one cohesive space with beautiful homogeneous light.



OneSpace enhances people's perceptions of public spaces by delivering improved acoustics and a superior daylight experience.

“The ceiling becomes the light, the light becomes the ceiling.”



OneSpace offers you multiple mounting possibilities to create stand out designs in retail environments.

Superior homogeneous light

OneSpace integrates LED lights with textile to create a white light ceiling surface that hides the source of light completely. It delivers excellent uniform light distribution for an enhanced daylight experience, which makes it a great functional light to work and be under. The result is a smooth and clutter-free ceiling of beautiful homogeneous light that feels as good as it looks.

Liberting design possibilities

OneSpace opens up new minimalistic lighting design opportunities. It is literally a customizable building block for transforming any ceiling into a seamless cohesive space. For ultimate design flexibility, the ultra-thin (120 mm / 4.7 in) panel is available in made-to-measure sizes (up to 10 m x 3 m / 32.8 ft x 9.8 ft), and can be mounted in multiple ways (free-hanging, ceiling-mounted or recessed). There is also the option to choose the panel's edge color.



Ultra-thin, 120 mm (4.7 in) ceiling panel



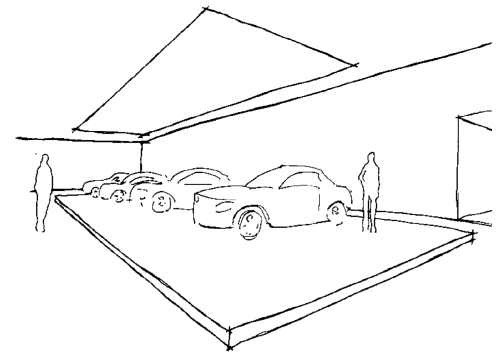
Multiple mounting possibilities

Simply smarter

OneSpace is simple to install and easy to maintain. The ceiling panel is designed to allow easy access to the unsightly building services behind it, and has a covered backing that is both dust and insect repellent. OneSpace also integrates perfectly with your building management system.

Sensory enhancing

OneSpace not only makes spaces look great, it enhances your experience of them. It delivers bright uniform glare-free LED light that eliminates shadows completely so you can see more clearly and view objects in their true light. It even enhances room acoustics by reducing disturbing sound reflections.



OneSpace is ideal for showcasing hero products in their true light as it delivers uniform, shadow-free illumination.

Supremely safe

OneSpace exceeds industry safety standards for both fire and mounting. The ceiling panel is composed of incombustible glass fiber and aluminium, and carries an industry-leading A2 fire-class safety rating. The mounting system also has a safety factor of over five times higher than the weight of the panel.

Re-think your next ceiling design at:
largeluminoussurfaces.com/onespace

Specifications

Due to continuous improvements and innovations, specifications may change without notice.

Philips OneSpace luminous ceiling

General Characteristics

Light level (100%)	
Europe	From 450 cd/m ² (1420 lm/m ²) @ 18 W/m ² to 780 cd/m ² (2460 lm/m ²) @ 38 W/m ²
United States	From 42 cd/ft ² (132 FC) @ 1.67 W/ft ² to 72 cd/ft ² (232 FC) @ 3.53 W/ft ²
CCT LED Color	3000 K or 4000 K
Color Rendering Index (CRI)	85
Maintenance factor L70	50,000 hours
Dimming	Between 10% and 100%
Acoustic properties	α_w 0.75 class C EN 11654
Noise Reduction Coefficient	NRC 0.75 ASTM C423 - 99

Product characteristics

Ceiling panel

Dimensions	Minimum: 2.4 m x 4.8 m, Maximum: 3 m x 10 m Minimum: 8 ft x 16 ft, Maximum: 9.8 ft x 32.8 ft (customizable per 1 mm / 0.04 in)
Thickness	120 mm / 4.7 in (excluding mounting and hoisting parts)
Weight	From 180 kg (2.4 m x 4.8 m panel) to 350 kg (3 m x 10 m panel) From 400 lb (8 ft x 16 ft panel) to 800 lb (9.8 ft x 32.8 ft panel)

Housing

Front material	Fiber glass
Trim edge color	RAL9011 Graphite black (other RAL colors available on request)
Gloss level	30%
Shape	Rectangular



Input voltage / power

Europe	220-240 V / 50-60 Hz
United States / Canada	110V-120V/50-60Hz or 277V/50-60Hz
Rest of the world	On request
Input power	Factory set between 18W/m ² and 38W/m ² . For US between 1.67W/ft ² and 3.53W/ft ²
Emergency Lighting Function	Yes (excl. high-risk task areas, implementation project dependent)

Control interface

DALI (other protocols e.g. BACnet, KNX, LON, Dry contact, 0-10V via additional gateways, not in standard delivery depending on local approbation and availability)

Temperature characteristics

Ambient temperature	5° – 35° C (41° – 95° F)
Relative humidity	< 95% non-condensing

Approbation / compliance

Fire rating	
Europe	A2 class: EN 13501: A2-s1, d0
United States	Class A UL723 (ASTM E 84)
Flame Spread Index	0
Smoke Developed Index	0
China	GB8624:2006 class A2-s1, d0, t0

Approbation

Ceiling Panel

Europe	CE
United States	UL Listed E307280
Canada	c-UL Listed E307280
Emergency lighting	EN 60598-2-22.

E-cabinet

Europe	CE
United States	UL-924 EM
Canada	c- UL-924 EM
China	CCC / CQC
Compliance	REACH / RoHS
Usage	Indoor use only

Optional accessories

Mounting kit rod	To be ordered separately
Mounting kit wire	To be ordered separately

